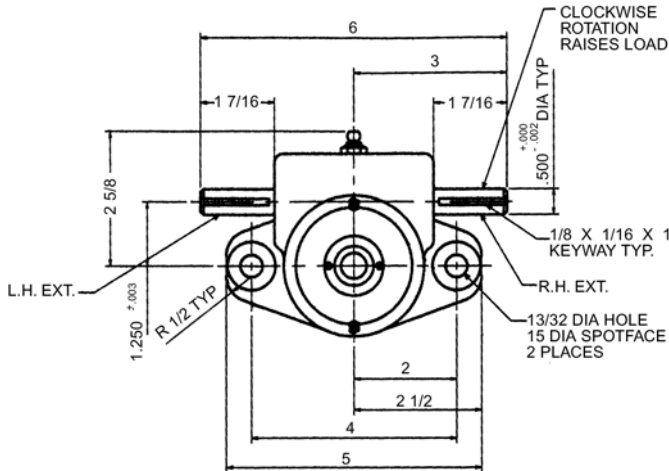


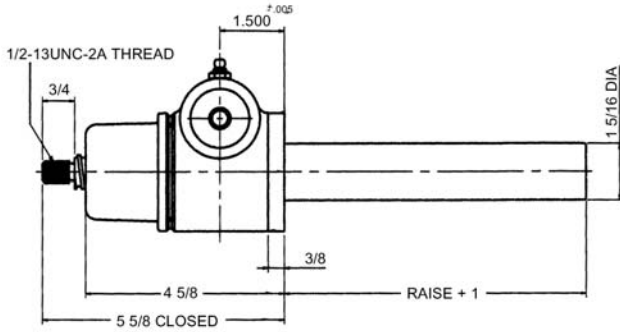
# 1 Ton Capacity

# Ball Screw Actuators

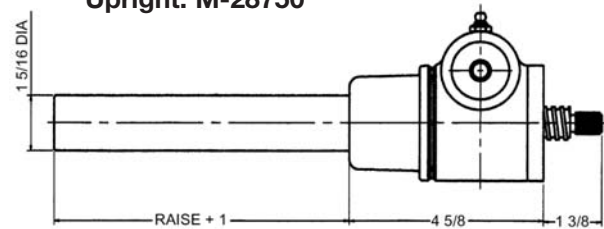
**NEW**



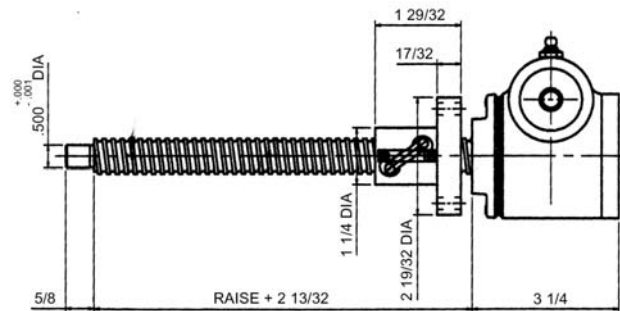
**3/4" Diameter x .200 Lead Lifting Screw**



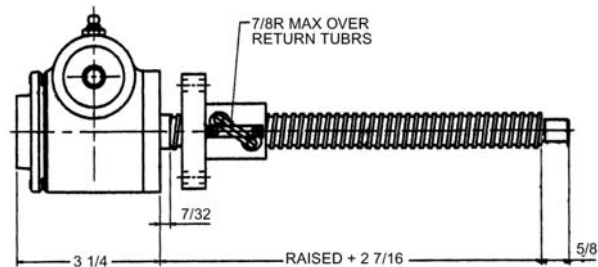
**Upright: M-28750**



**Inverted: M-28749**

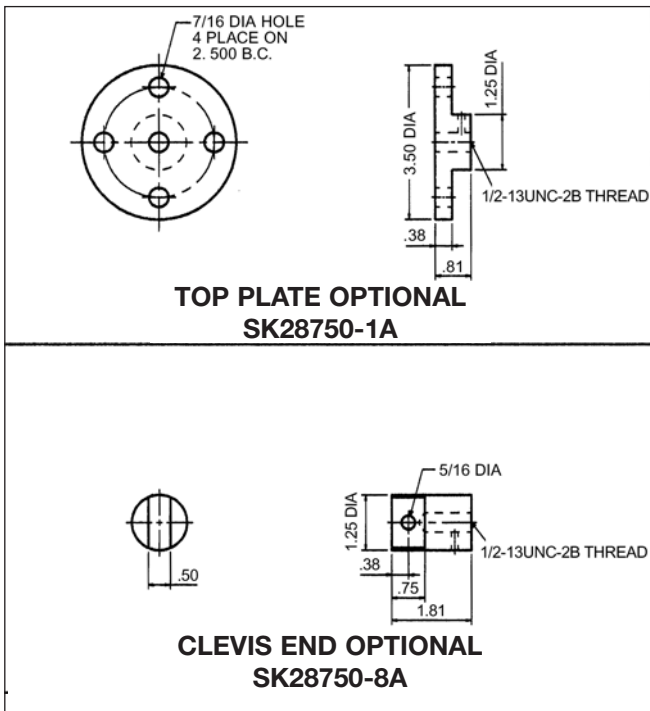


**Upright Rotating: UM-28751**



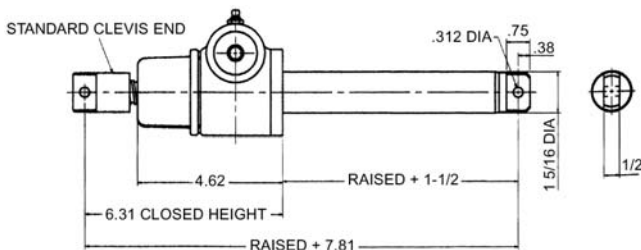
**Inverted Rotating: DM-28751**

Note: Lifting screw is not keyed. Top should be secured to a lifting member to prevent rotation. When a Bellows Boot is required, see pages 143-144. Dimensions are subject to change without notice.



**TOP PLATE OPTIONAL  
SK28750-1A**

**CLEVIS END OPTIONAL  
SK28750-8A**



**Double Clevis: CCM-28750**

Maximum allowable raise in compression 12" - Rating 2000 lb.