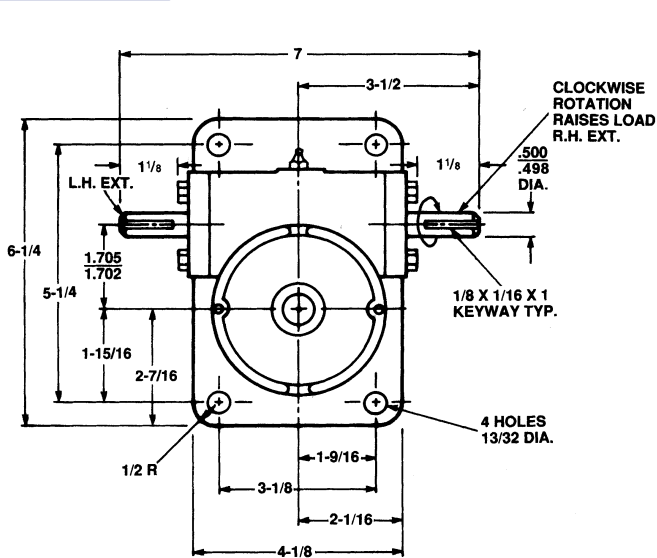
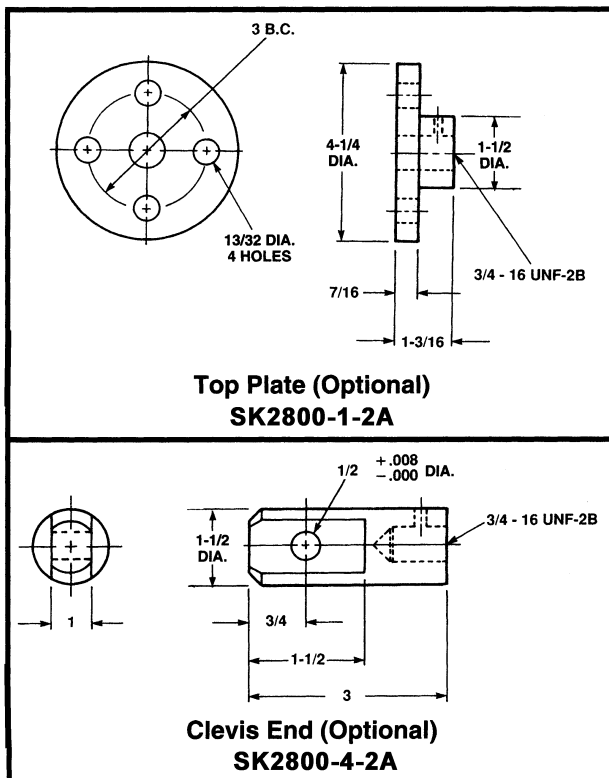


Ball Screw Actuators

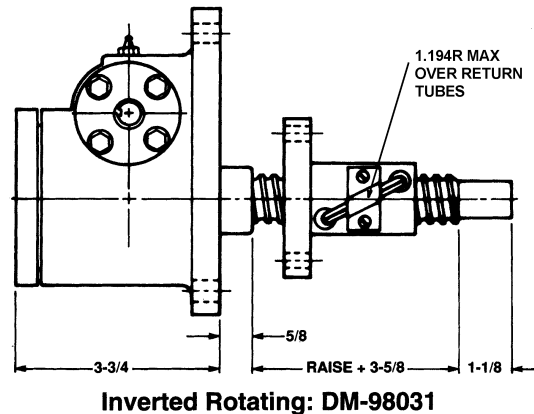
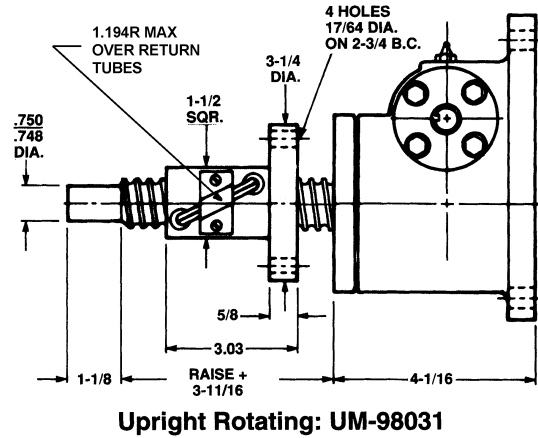
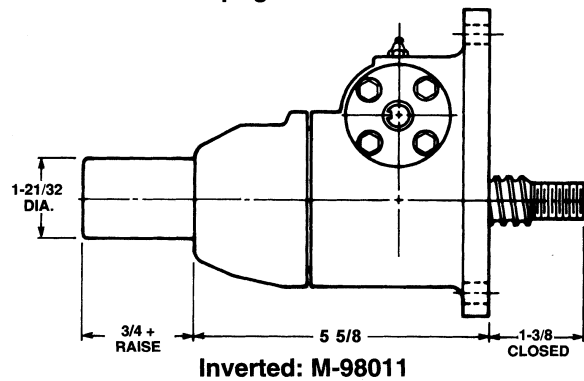
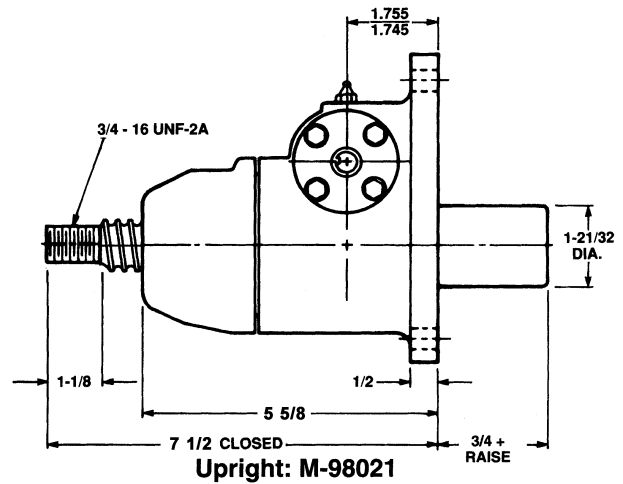
2 Ton - 1" Lead 9800 Series



1" Diameter x 1.000 Lead Lifting Screws

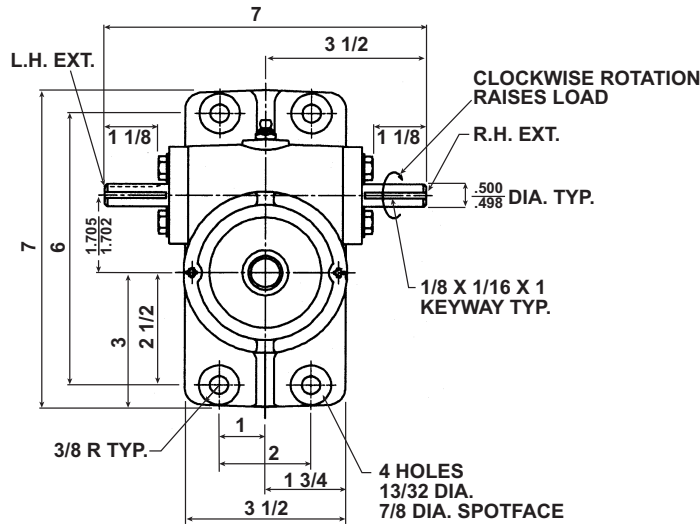


Note: Lifting screw is not keyed. Top should be secured to a lifting member to prevent rotation. When a Bellows Boot is required, see pages 143-144. Dimensions are subject to change without notice.

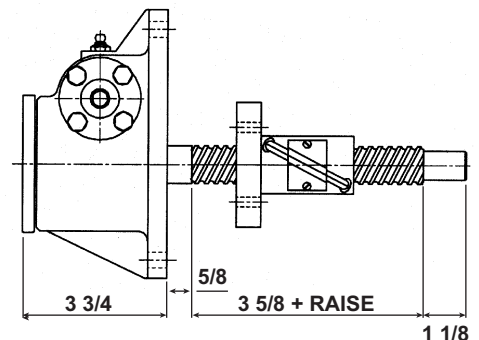
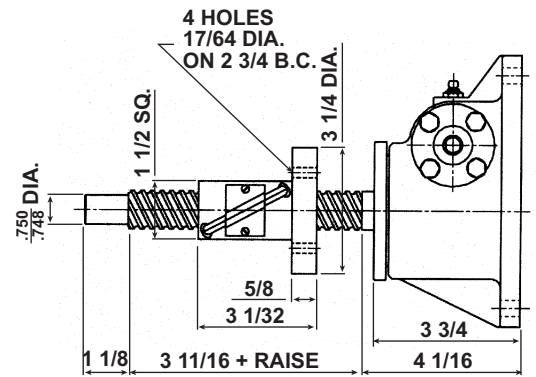
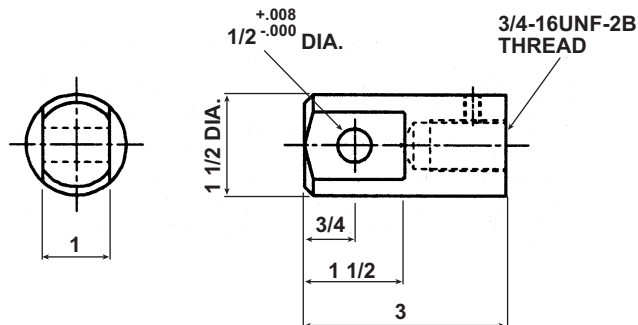
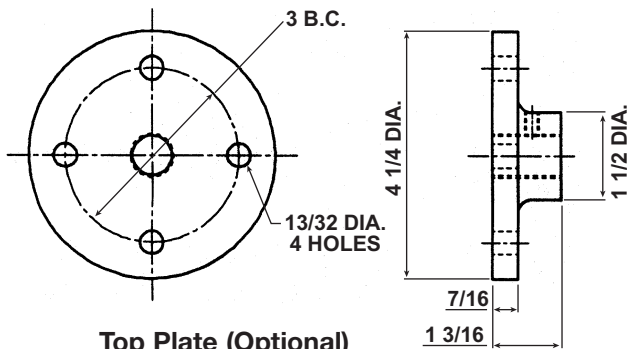
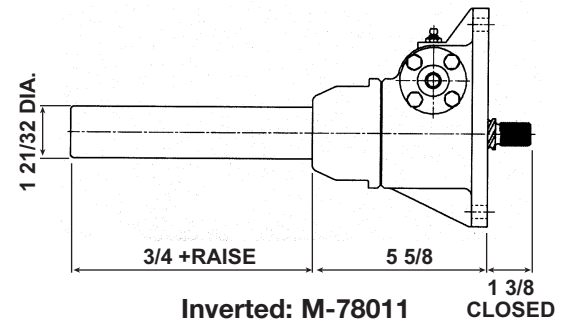
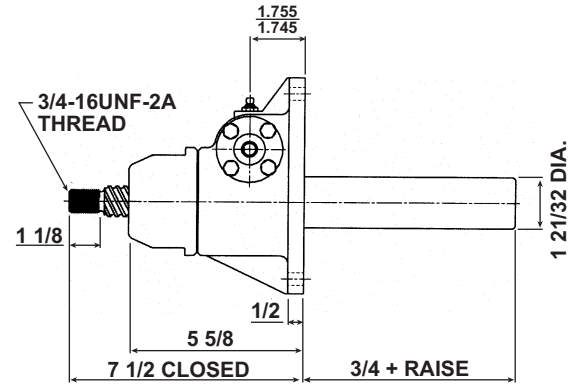


Ball Screw Actuators

2 Ton - 1" Lead 7800 Series



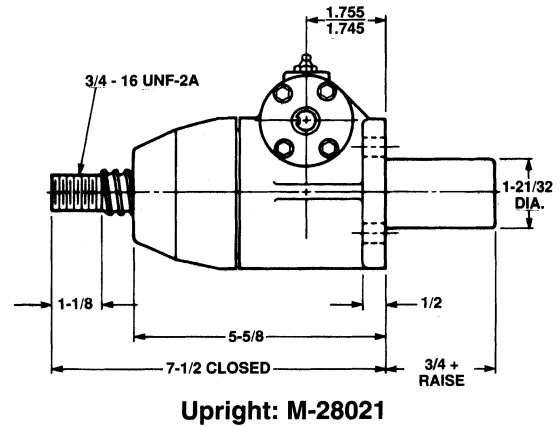
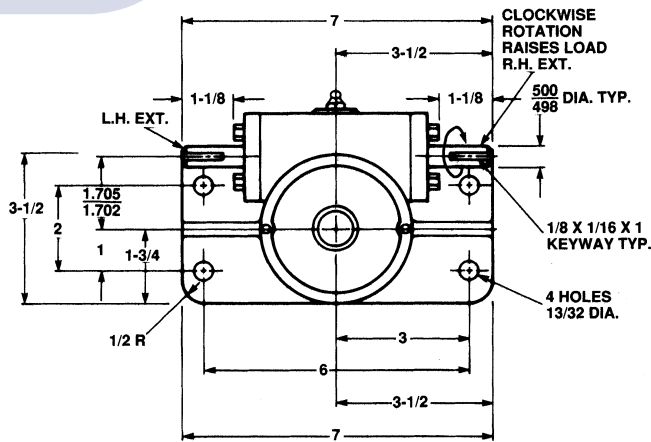
1" Diameter x 1.000 Lead Lifting Screws



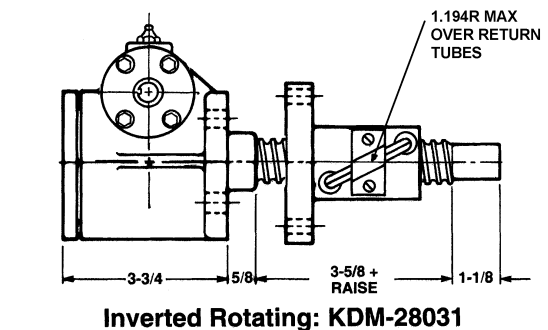
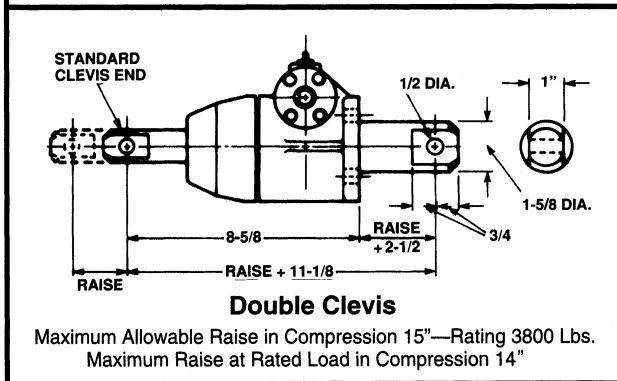
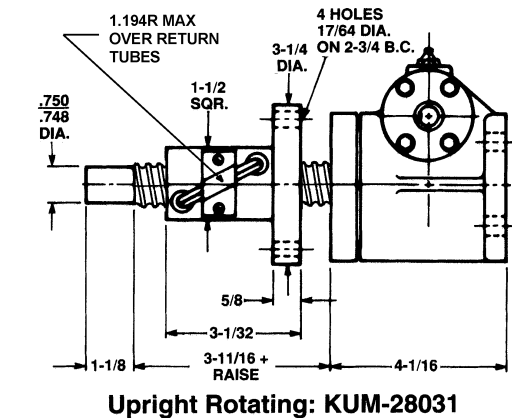
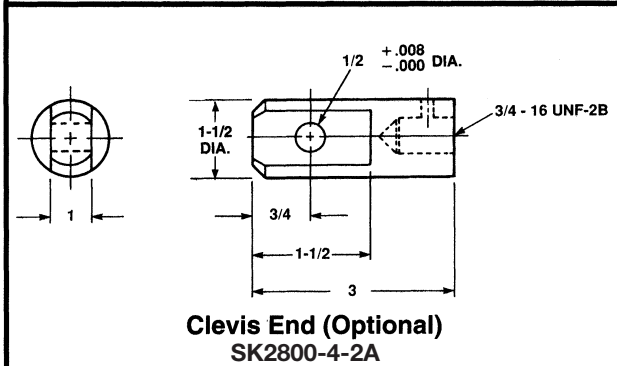
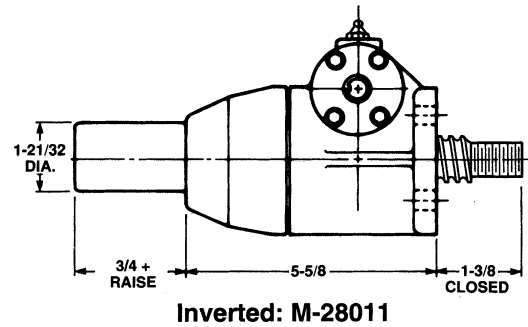
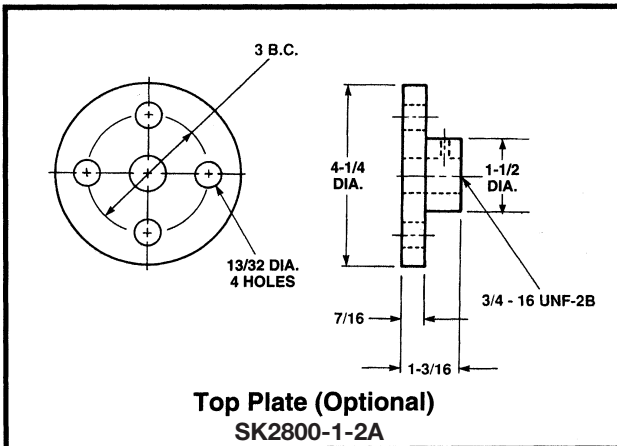
Note: Lifting screw is not keyed. Top should be secured to a lifting member to prevent rotation. When a Bellows Boot is required, see pages 143-144. Dimensions are subject to change without notice.

Ball Screw Actuators

2 Ton - 1" Lead 2800 Series



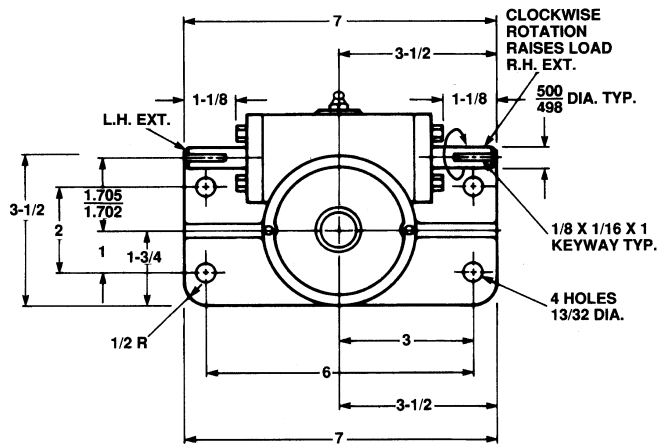
1" Diameter x 1.000 Lead Lifting Screws



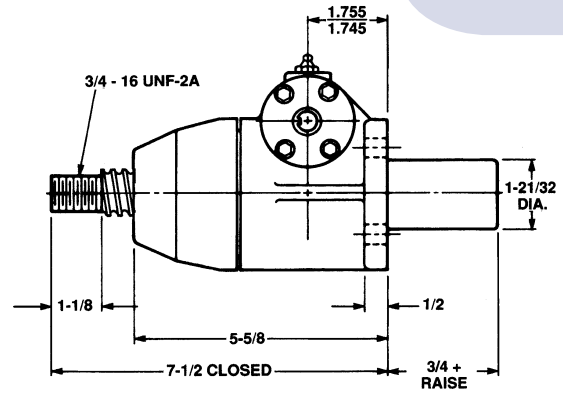
Note: Lifting screw is not keyed. Top should be secured to a lifting member to prevent rotation. When a Bellows Boot is required, see pages 143-144. Dimensions are subject to change without notice.

2 Ton Capacity 2800 Series

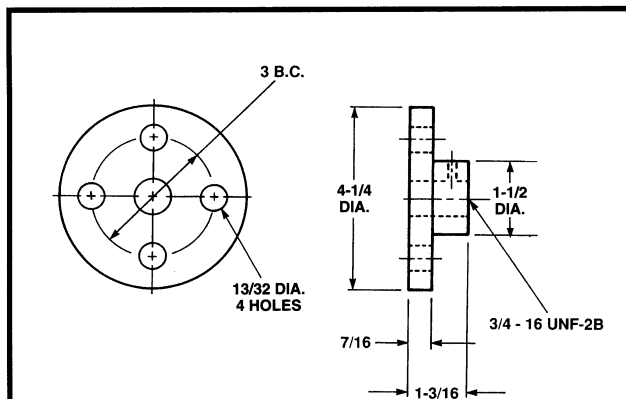
Ball Screw Actuators



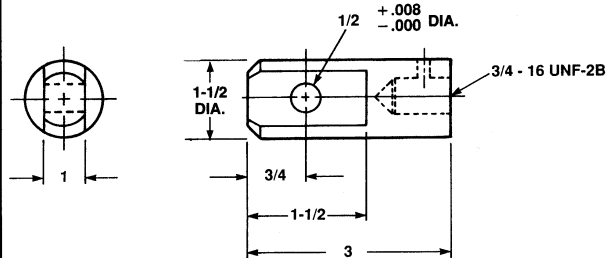
1" Diameter x .250 Lead Lifting Screws



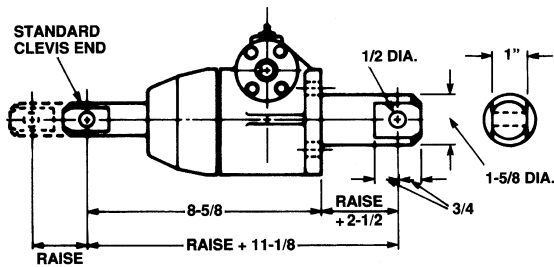
Upright: M-2802



Top Plate (Optional)
SK2800-1-2A

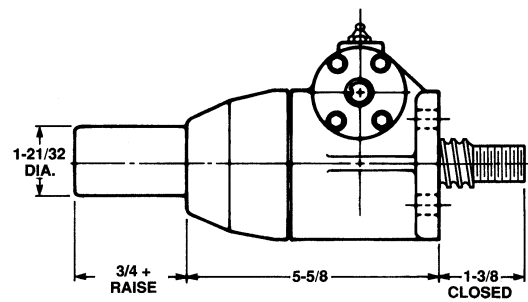


Clevis End (Optional)
SK2800-4-2A

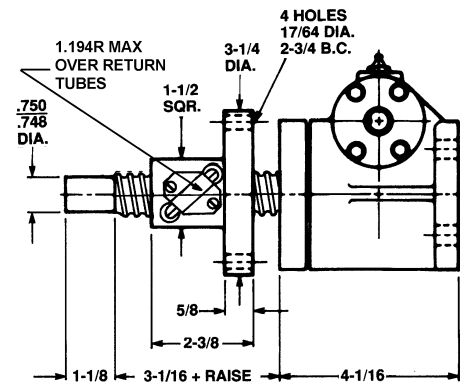


Double Clevis

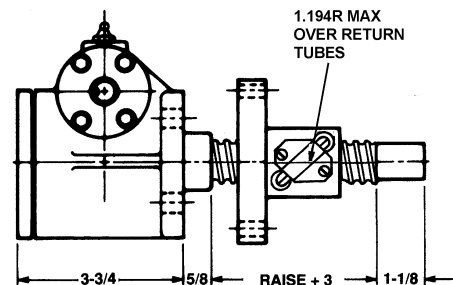
Maximum Allowable Raise in Compression 15"—Rating 3800 Lbs.
Maximum Raise at Rated Load in Compression 14"



Inverted: M-2801



Upright Rotating: KUM-2803



Inverted Rotating: KDM-2803

Note: Lifting screw is not keyed. Top should be secured to a lifting member to prevent rotation. When a Bellows Boot is required, see pages 143-144. Dimensions are subject to change without notice.