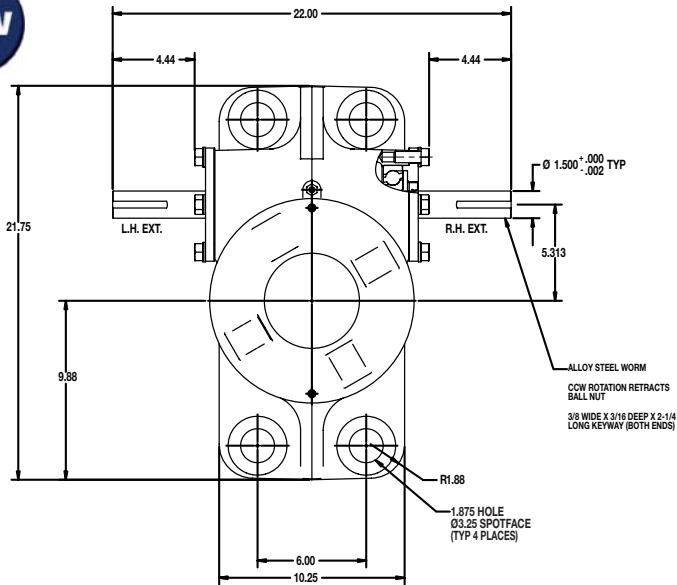


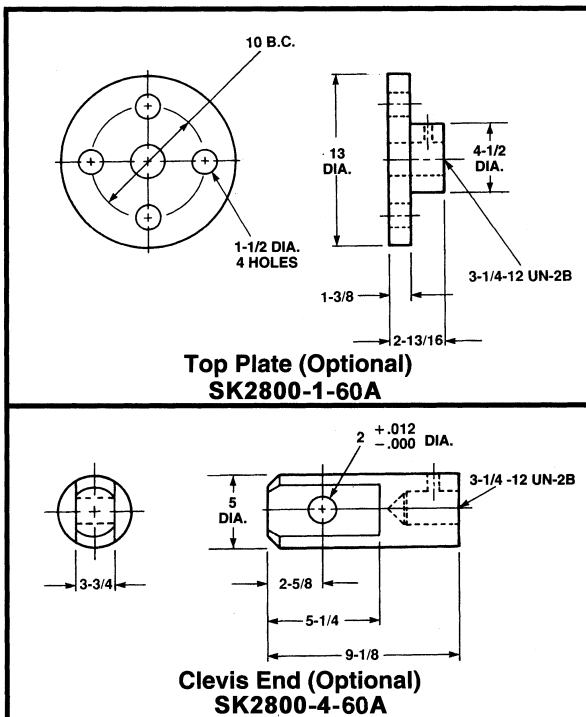
Ball Screw Actuators

50 Ton Capacity 9800 Series

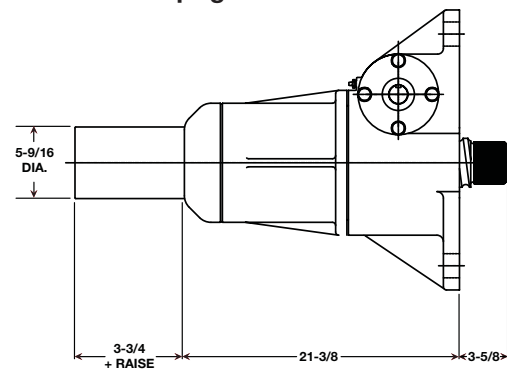
NEW



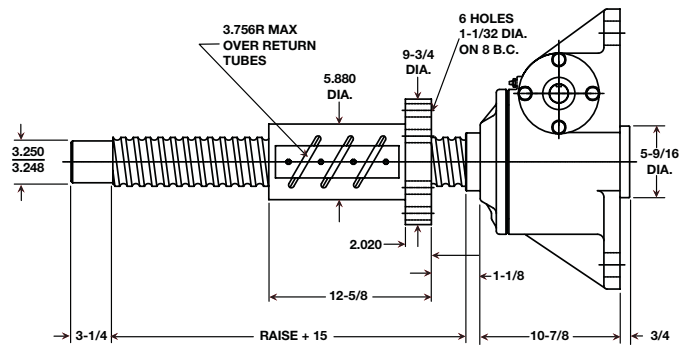
4" Diameter x 1.000 Lead Lifting Screw



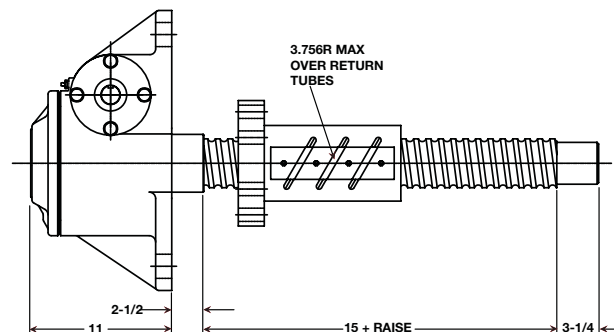
Upright: M-9860



Inverted: M-9859



Upright Rotating: UM-9861



Inverted Rotating: DM-2861

Note: Lifting screw is not keyed. Top should be secured to a lifting member to prevent rotation. When a Bellows Boot is required, see pages 143-144. Dimensions are subject to change without notice.

