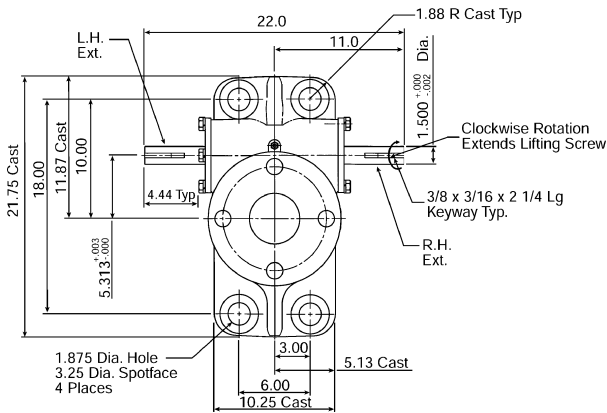
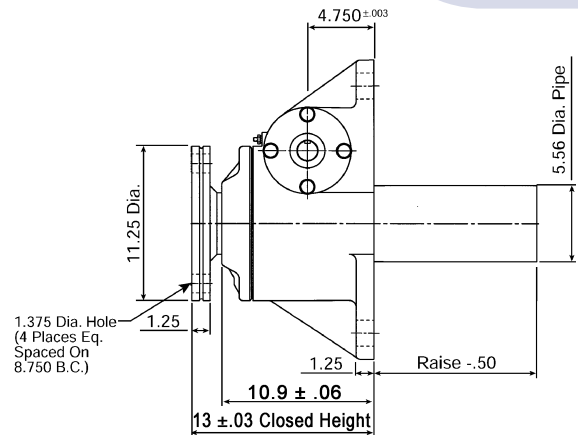


50 Ton Capacity 9000 Series

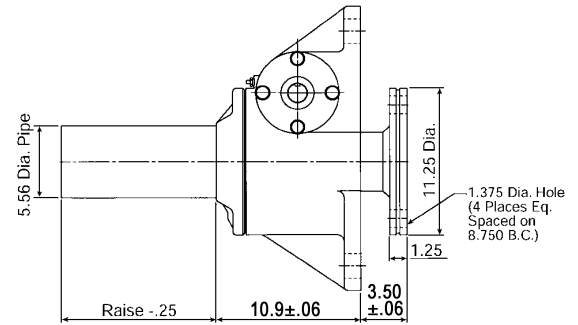
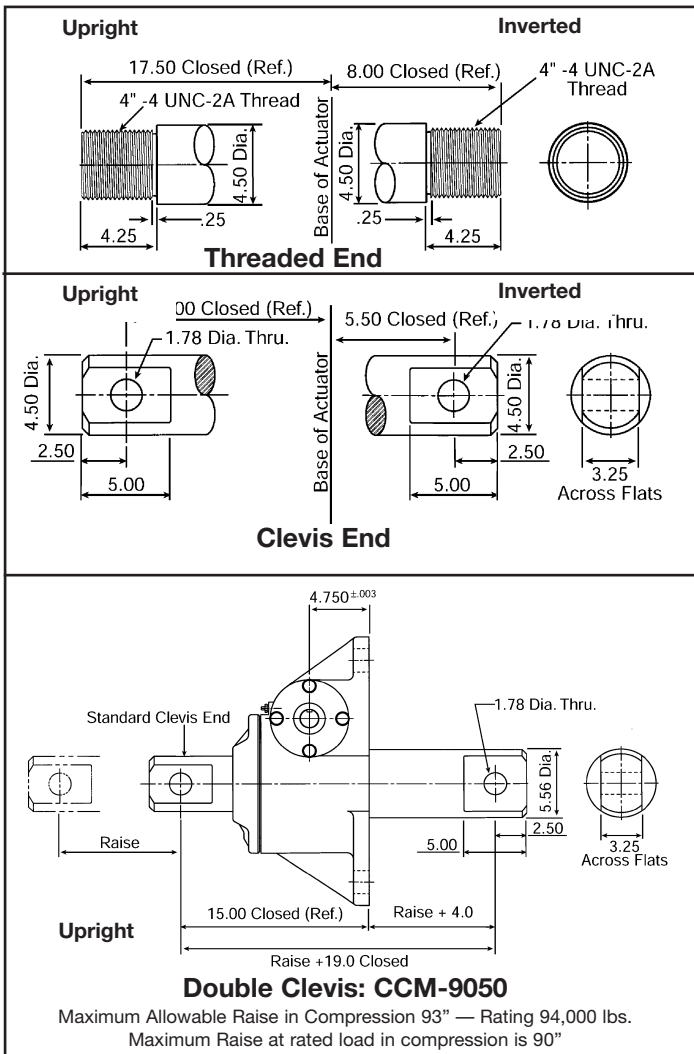
Machine Screw Actuators



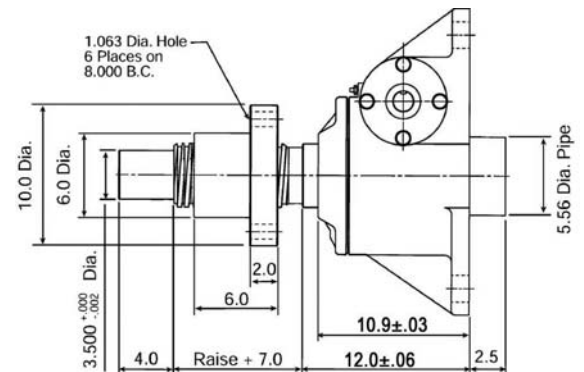
4 1/2 Diameter x .666 Lead Lifting Screw



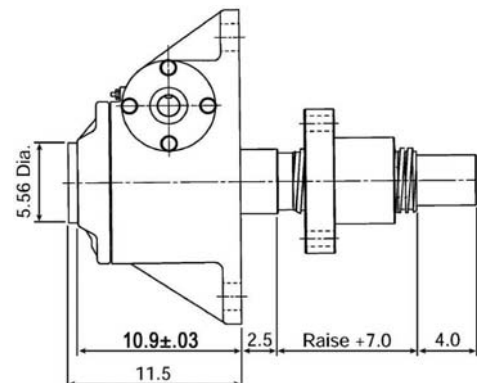
Upright: M-9050



Inverted: M-9049

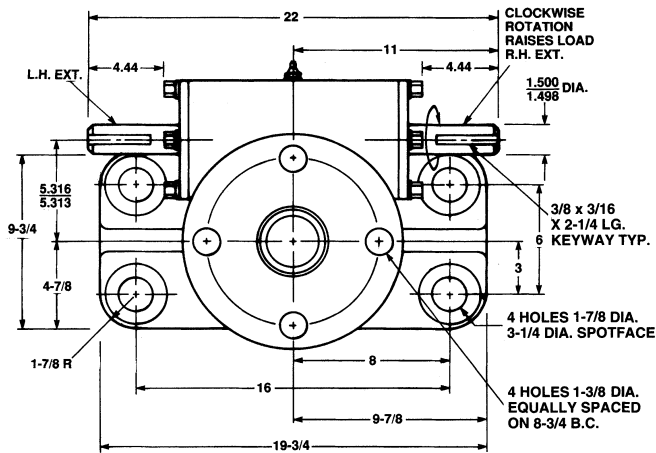


Upright Rotating: UM-9051

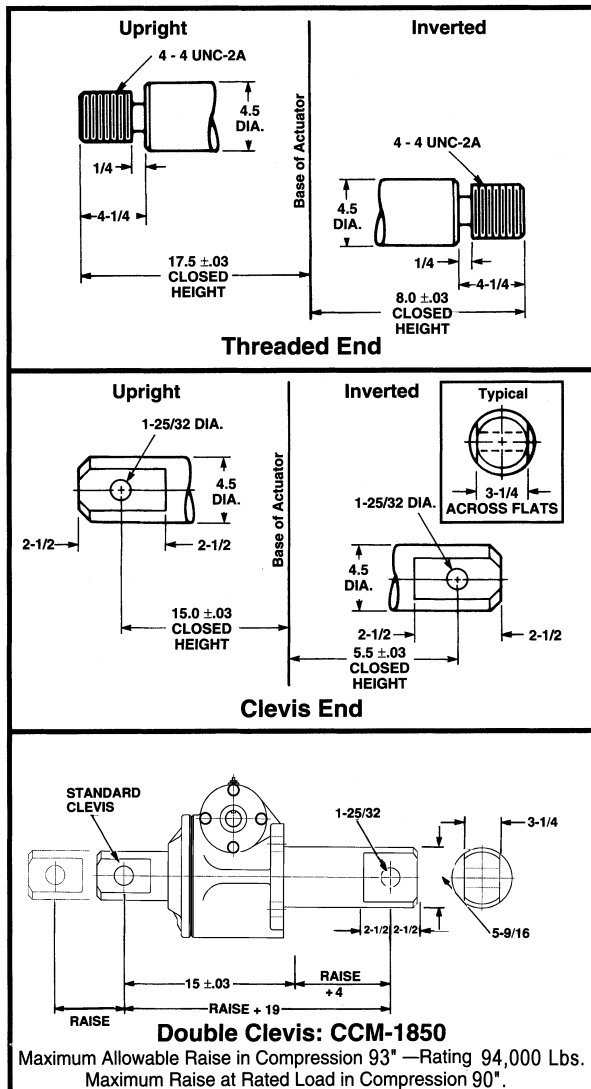
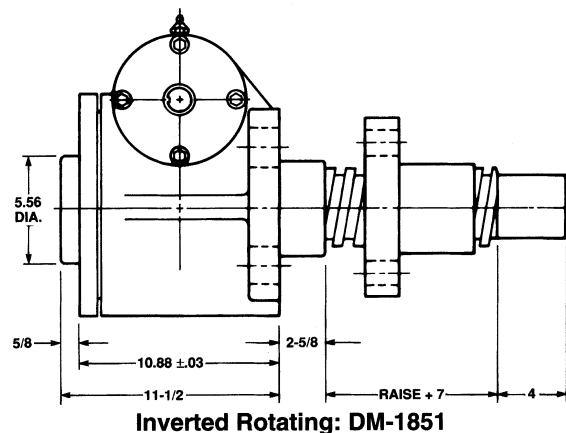
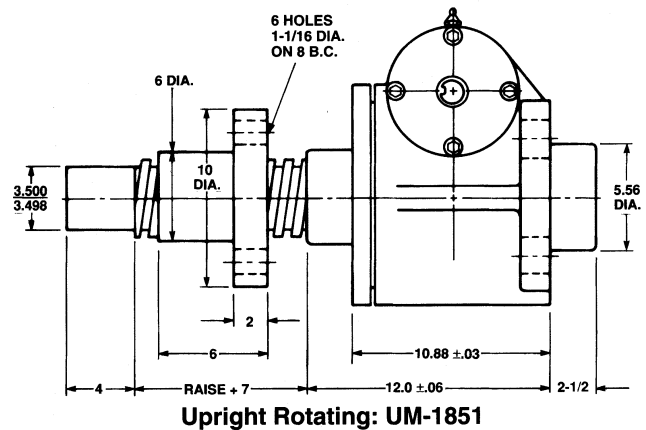
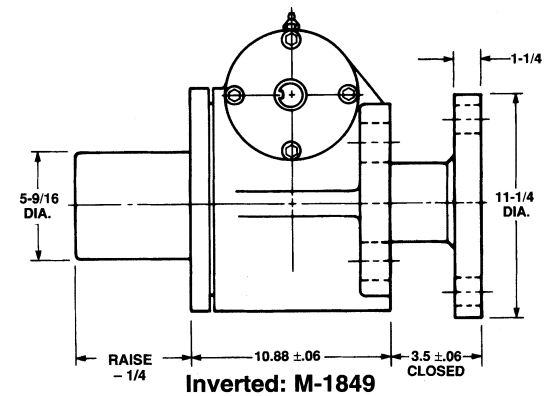
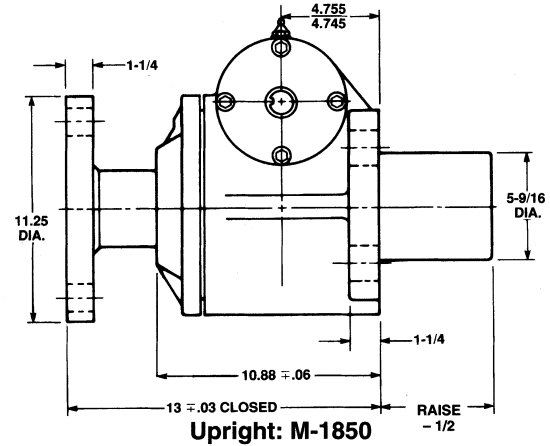


Inverted Rotating: DM-9051

Note: Lifting screw is not keyed. Top should be secured to a lifting member to prevent rotation. When a Bellows Boot is required, see pages 143-144. Dimensions are subject to change without notice.



4 1/2" Diameter x .666 Lead Lifting Screws



Note: Lifting screw is not keyed. Top should be secured to a lifting member to prevent rotation. When a Bellows Boot is required, see pages 143-144. Dimensions are subject to change without notice.