

# DRIVE SOLUTIONS

EN



[www.sitspa.com](http://www.sitspa.com)

SIT ITALY  
SIT FRANCE  
SIT SPAIN  
SIT GERMANY  
SIT SWITZERLAND  
SIT USA  
SIT CHINA  
SIT INDIA



## THE SIT GROUP, A TRADITION BEGUN IN 1838.

The SIT Group is a leading global manufacturer and supplier of industrial power transmission solutions. The company dates as far back as 1838, when the parent company started to develop and manufacture technological components for the textile industry, and later diversified its production into the mechanical transmission segment. Today, thanks to over 50 years of specific experience in power transmission and a close-knit team of highly qualified professionals, the Group engages in constant technological innovation in order to offer the best application solutions in mechanical power drives.

The SIT Group conducts continuing research in innovative technologies that will define the environment of the future.

Our experience, along with application expertise gained over decades, is made available and used every day by our customers to develop successful innovative machines and systems.



One of today's leading European power drive manufacturers, the SIT Group develops, engineers, manufactures and distributes high quality transmission solutions and components for superior industrial applications worldwide. With operations on 3 continents, SIT manufactures pulleys, rubber and polyurethane belts, drive couplings, locking assemblies and a wide range of accessories.

## MISSION

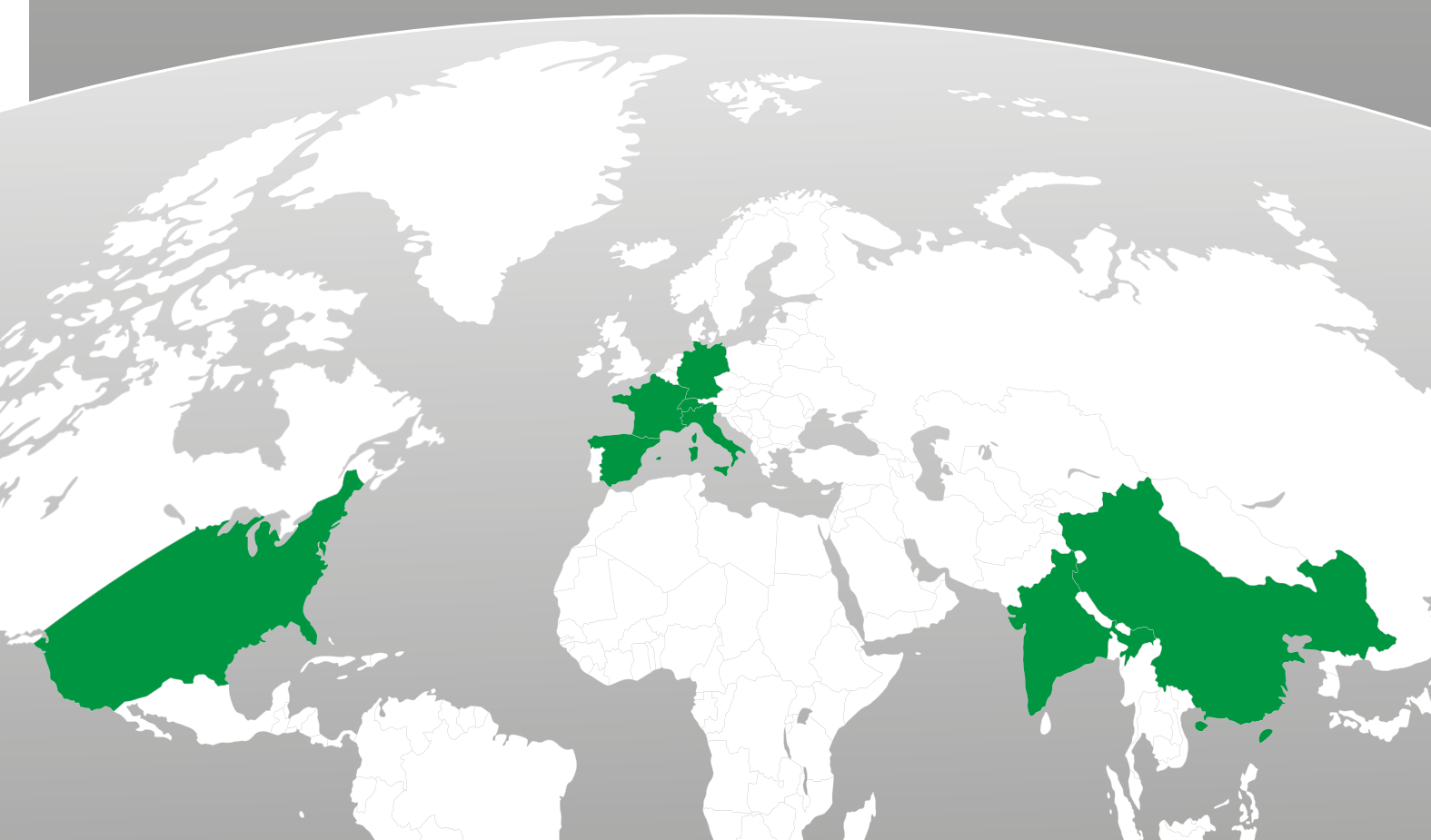
Our mission is to provide customers with the most technically efficient and economic solutions. Our personal and partnership commitment means we can be at your side to propose and inspire innovative ideas and solutions.

## A GLOBAL ORGANIZATION

Our research and development are based in Italy, as well as the group's main production and logistics centre. The global contribution given to our customers success is made through our subsidiaries in three continents, which are based in Germany, France, Switzerland, Spain, United States, China and India.

With their production capacity and logistics, they guarantee reliable products, technical support along with global service and quality. Our strong international team of highly qualified engineers who provide the best technical and economic solutions on a daily basis. We are able to offer the best technical and economic solution for each and every specific application.

We can offer solutions from simple to complex applications within mechanical transmission, a unique added-value support.





TIMING PULLEYS

V-PULLEYS

POLYURETHANE BELTS

SPROCKETS, PLATE WHEELS

COUPLINGS

TAPER BUSHING

SELF LOCKING ELEMENTS

CUSTOM PRODUCTIONS  
ACCORDING TO DRAWING



sitspa.com | MANUFACTURING



## STRONG MANUFACTURING EXPERIENCE

A century-old industrial tradition and 50 years of experience in the development and manufacturing of power transmission components.

Our production facilities use the most advanced technologies. Through constant investment in machinery, equipment and tools, SIT achieves high productivity and flexible efficiency. Our strict quality controls of outgoing products to ISO 9001 quality certifications allows the company to meet the most stringent requirements. The experience, quality awareness and professionalism of our human resources has earned us international recognition as a strong quality-orientation company.

## OVER 25,000 SQM OF PRODUCTION AREA IN 3 CONTINENTS

Today's production of drive belts, metal components and accessories, is the result of continuous investments made by the group to meet its customers' needs. Experience, culture, technical resources and expertise make SIT a market leader and standard setter.

## RESEARCH & DEVELOPMENT

Through its team of experienced technicians and engineers dedicated to Research and Development along with a Technology Centre equipped with the advanced dynamic test benches. New sophisticated raw materials and finish product testing gives highly innovative products and solutions.



Manufacturing plant - Val Brembilla (BG)





CAD LIBRARY

CALCULATION SOFTWARE

E-SALES NAUTILUS

QUICK AND PUNCTUAL  
DELIVERY



SIT logistics hub in Cusago (MI)



E-Sales Nautilus



SitDrive



SitCouplings



CAD Drawings



#### SIT ONLINE TOOLS

Online resources include downloadable technical catalogues and CAD drawings, sophisticated software for designing power drives, product availability searches, and order submission tools (also from customers' management system).

## BEYOND PRODUCTS: LOGISTICS AND SERVICE QUALITY AND PERFORMANCE

#### LOGISTICS

The integration of advanced manufacturing technologies and cutting-edge logistics ensures a high level of product quality and availability.

The flexibility, speed and continuous improvement of SIT logistics provide competitive advantages and opportunities to all customers. Our new automated logistic center in Cusago, Milan ensures a highly efficient flow of products.

- 18.000 sqm of warehouse and office space
- 60.000 coded products
- 200.000 order lines shipped every year

#### ONLINE TOOLS

In addition to the design support service provided by our application engineers, the [www.sitspa.com](http://www.sitspa.com) website allows quick and easy access to a great deal of information including: drive sizing through the SITDrive and SITCoupling software applications, 3D drawings of standard components, technical documentation, available stock and much more.



# HIGH PERFORMANCE SYNCHRONOUS DRIVES

H.O.T.

★★★★★

## SILENT SYNC®

Innovative double helical offset tooth drive.

SILENT SYNC® is an innovative double helical offset tooth drive which, thanks to continuous and progressive meshing between belt and pulley, provides very high performance in terms of both noiseless and precision, reducing vibration.

- Tensile member: aramid fiber (Kevlar®)
- Compound: nitrile rubber (HNBR)
- Belt facing: JPEX (layer of nylon fabric and high density polyethylene)

### Benefits

- Noise reduction up to 15 decibels compared to any other type of toothed belt
- Drastic reduction of vibrations
- Self-aligning transmission (pulleys do not require flanges)
- High transmissible torque
- Belts available in both rubber and polyurethane
- Static Conductive (ISO 9563)



SILENT SYNC® 8M 14M

FALCON Pd® 8M 14M



GTR

★★★★★

## FALCON Pd®

Thanks to innovative construction materials enabling high torque transmission and reduced dimensions, FALCON Pd® is an ideal solution for designing new applications. Available in 8M and 14M pitch. SIT manufactures a full range of pulleys suitable for any application.

- Tensile member: aramid fiber (Kevlar®)
- Compound: nitrile rubber (HNBR)
- Belt facing: Double layer of nylon fabric and high density polyethylene

### Benefits

- Outstanding tensile strength for ultra-high performance
- Very high torque transmission
- Possibility to use back idlers
- Static Conductive (ISO 9563)



# SIT SYNCHRONOUS DRIVES

SIT toothed belt drives are constantly updated to meet the most advanced specific application requirements. Through the use of an advanced test laboratory and a focus on application engineering solutions, we are able to offer a wide range of products and solutions for every technical application, from the lightest to the heaviest. Synergies between our production sites industrial partners and the ability to develop customized products for specific requirements allow us to produce solutions using highly advanced materials technologies, and to provide a virtually endless range of possible solutions. We offer the complete drive unit, belt and pulley (customized if required) - a unique advantage in terms of reliability and quality assurance.



★★☆☆☆☆  
**SIT TOP DRIVE® HTD**

- For medium and low torque drives.
- Tensile members: fiberglass
  - Compound: chloroprene rubber (CR)
  - Belt facing: polyamide (nylon)
  - 3M, 5M, 8M, 14M pitches
  - Double toothing 5M, 8M, 14M



★★★★☆  
**SIT MUSTANG® SPEED HTD**

- For high torque and high speed drives.
- Tensile members: fiberglass
  - Compound: chloroprene rubber (CR)
  - Belt facing: polyamide (nylon)
  - 3M, 5M, 8M, 14M pitches
  - Double toothing 5M, 8M, 14M



★★★★★  
**SIT MUSTANG® TORQUE HTD**

- For very high torque and low speed drives.
- Tensile members: aramid fiber (Kevlar®)
  - Compound: chloroprene rubber (CR)
  - Belt facing: polyamide (nylon)
  - 8M, 14M pitches



★★★★☆☆  
**SIT HI-PERFORMANCE Pd® PLUS**

- For medium torque drives, even distribution of effort, good tooth jump resistance.
- Tensile members: fiberglass
  - Compound: chloroprene rubber loaded with fiber (Wingprene®)
  - Belt facing: polyamide with increased thickness (nylon)
  - 8M, 14M pitches



★★★★☆☆  
**BLACKHAWK Pd®**

- Universal tooth profile suitable for HTD pulleys
- Tensile members: aramid fiber (Kevlar®)
  - Compound: nitrile rubber (HNBR)
  - Belt facing: polyamide and polyethylene
  - 8M, 14M pitches



★★★★☆☆  
**SIT TOP DRIVE® STD**

- Precise and consistent meshing, ideal for precision positioning even with reverse motion.
- Tensile members: fiberglass
  - Compound: chloroprene rubber (CR)
  - Belt facing: polyamide (nylon)
  - 3M, 5M, 8M, 14M pitches
  - Double toothing 5M, 8M, 14M



HTD / 3M 5M 8M 14M  
HTD-RPP / 8M 14M  
STD / 3M 5M 8M 14M  
CLASSICA / MXL XL L H XH



★★★★☆☆  
**SIT MUSTANG® SPEED STD**

- For high torque and high speed drives.
- Tensile members: fiberglass
  - Compound: chloroprene rubber (CR)
  - Belt facing: polyamide (nylon)
  - 8M pitches



★★☆☆☆☆  
**SIT CLASSICA**

- Economical alternative to chain and gear drives.
- Tensile members: fiberglass
  - Compound: chloroprene rubber (CR)
  - Belt facing: polyamide (nylon)
  - MXL, XL, L, H, XH pitches



**CONTROL INSTRUMENTS**  
**TEN-SIT® 2.0**, electronic device for belt tension measuring.  
**LINE-LASER®**, a laser device to check the pulleys alignment. Fast and accurate.



Maximum performance index  
★★★★★  
Minimum Performance Index  
★☆☆☆☆



# sit FRICTION BELT DRIVES

With its decades of technical and applicative experience in the development and production of complete drive units for the industrial sector and aftermarket, SIT offers the best range of V-belt drives, including customized products for any specific requirements.

Availability of high-tech products, in-depth knowledge of materials and processes combined with the ability to design and manufacture complete belt and pulley drive units, make us the ideal partner for machinery and industrial equipment manufacturers.



★★★★★  
**sit NEXT®**  
MOULDED COG V-belt  
**MAINTENANCE-FREE**, narrow section. Withstands operating temperatures in the range of **-40 °C** to **+130 °C**. Electrically conductive according to ISO 1813.

- Tensile members: low stretch polyester
- Compound: **EPDM** (Ethylene Propylene Diene Monomer)
- Belt facing: high performance fabric
- XPZ, XPA, XPB, XPC



★★★★★  
**MITSUBOSHI® MAXSTAR POWER®**  
ENVELOPE V-belt for heavy loads produced using superior category CR compounds and reinforced cable cords for high-power drive systems.

- Tensile members: polyester (HMLS)
- Compound: chloroprene rubber (CR)
- Belt facing: special high resistance cotton/polyester layer
- SPA, SPB, SPC



★★★★☆  
**sit TORQUE FLEX®**  
MOULDED COG V-belt these moulded cog belts are transversely rigid, with improved flexibility thanks to the moulded cogs.

- Tensile members: high strength polyester (Vitacord)
- Compound: chloroprene rubber loaded with fiber (Wingprene®)
- XPZ, XPA, XPB, XPC
- 3VX, 5VX, 8VX
- ZX, AX, BX, CX



★★★☆☆  
**MITSUBOSHI® ENVELOPE**  
ENVELOPE V-belt with exceptional durability for applications even in severe environments. Classical section also available in BARE BACK® version.

- Tensile members: polyester (HMLS)
- Compound: natural rubber (NR)
- SPZ, SPA, SPB, SPC
- Z, A, B, C, D



★★★★☆  
**MITSUBOSHI® SUPER KB**  
ENVELOPE V-belt suitable for heavy duty operating conditions, the special BARE BACK® coating allows use in smooth and counter-bending gallop applications.

- Tensile members: aramid fiber (Kevlar®)
- Compound: chloroprene rubber (CR)
- Belt facing: BARE BACK® cotton
- 3LK, 4LK, 5LK



★★★☆☆  
**sit EXCELITE ES®**  
ENVELOPE V-belt with excellent price to performance ratio, suitable for general industrial applications intended for not-too-heavy duty use.

- Tensile members: polyester (HMLS)
- Compound: chloroprene rubber (CR)
- SPZ, SPA, SPB, SPC
- Z, A, B, C, D



- PREMIUM
- TORQUE FLEX
- MITSUBOSHI
- SUPER KB
- EXCELITE
- POLY-V
- SIT BANDED
- SIT VARIO



★★★★★  
**sit POLY-V**  
The traditional **reliability** and **expertise** that accompanies the SIT brand meets Hutchinson's **high technology**. The lengthwise ridged construction helps to achieve a very compact transmission of even heavy loads. Also available in elastic FLEXONIC® and CONVEYXONIC® design.

- Tensile members: polyester (HMLS)
- Compound: chloroprene rubber (CR)
- H, J, K, L, M



★★★★☆  
**sit BANDED**  
Banded belt for applications requiring high torque variation and severe loads.

- XPZ, XPA, XPB, XPC
- SPA, SPB, SPC
- 3V, 5V, 8V
- BX, CX



**sit VARIO**  
Variator belt. Used for high power transmission in variable speed drive systems. Produced using chloroprene rubber (CR) compound and Flexten cable cord. Wide range of variable pulleys designed and built to optimize the service life of the drive unit.



**CONTROL INSTRUMENTS**  
**TEN-SIT® 2.0**, electronic device for belt tension measuring.  
**LINE-LASER®**, a laser device to check the pulleys alignment. Fast and accurate.

Maximum performance index  
★★★★★  
Minimum Performance Index  
★★★★★





# ELATECH® POLYURETHANE BELTS

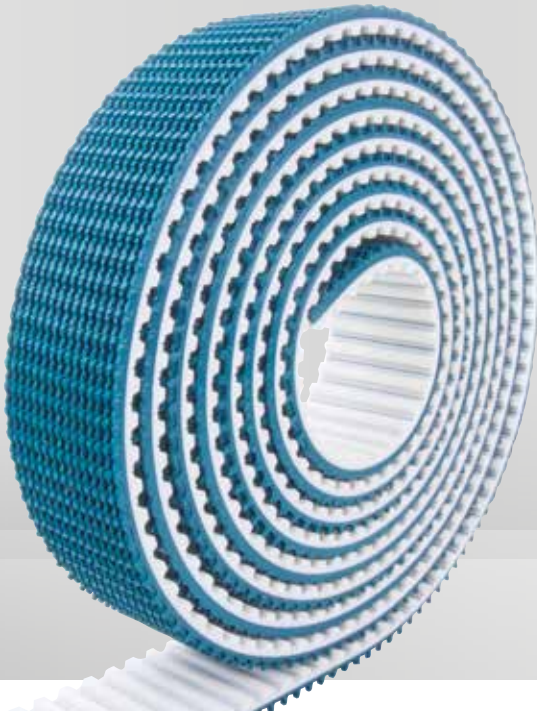
Solutions for linear positioning, conveying, power transmission and lifting.

ELATECH® the company of the SIT group, specialized in the development, design and manufacture of polyurethane belts.

With its state-of-the-art manufacturing equipment, advanced testing department and a time-tested team of engineers and technicians, the company offers a wide range of products designed to meet any linear positioning, conveying, power transmission and lifting need.

## ELATECH® M e V

ELATECH® M belts are produced in rolls and are available in any desired length. Wide range of pitches and profiles, including double tothing. ELATECH® V-belts are welded belts designed specifically for linear conveying.



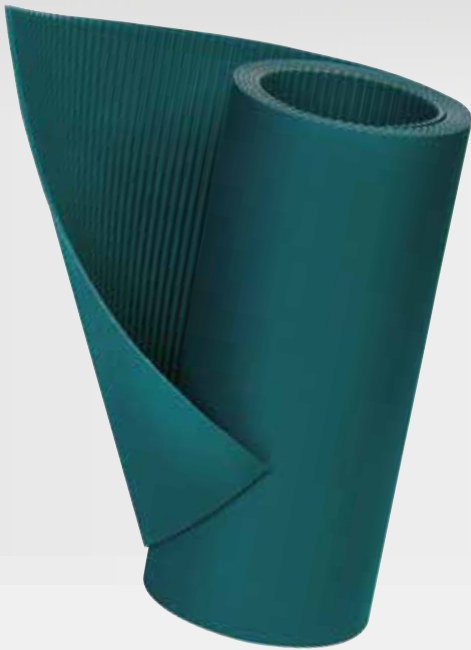
## ELA-flex SD®

ELA-flex SD® drive belts feature continuous cords, which makes them ideal for power transmission. Available in a wide range of profiles and pitches and in any tooth-to-tooth length from 800 to 24.000 mm.



## ELATECH® SYNCRO-MAX®

ELATECH® SYNCRO-MAX® Extra-Wide polyurethane belts extend the benefits of synchronous toothed belts to larger surfaces and to typical conveyor belt and modular handling system applications.



T2,5 T5 T10 T20  
AT3 AT5 AT10 AT15 SAT10 AT20  
ATL5 ATL10 ATL20  
TK5 TK10 ATK5 ATK10  
HTD 3M 5M 8M 14M  
RTD 5M 8M 14M  
STD S5M S8M S14M  
EAGLE E5 E8 E10 E14  
MXL XL L H XH  
F1 F2 F2,5 F3 F9  
POLY-V K  
TT5



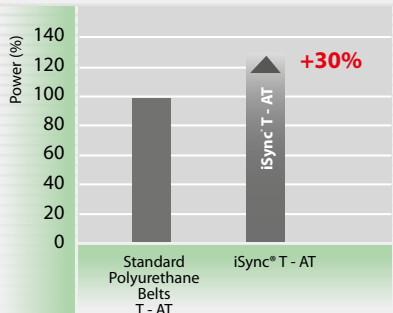




- PAZ/PAR
- CELLOFLEX
- POROL
- PU
- SYLOMER
- FISHBONE PU
- PUR70, PUR85
- PVC
- SUPERGRIP
- MINIGRIP
- LINATRIL
- LINATEX
- NBR
- VITON
- CORREX
- APL THERMOPLAST
- SILICONE
- TECNOGUM
- MULTIRIB

ELATECH® iSync®

Made from a special polyurethane compound and featuring high-strength steel cords, ELATECH® iSync® belts are the result of a unique, highly sophisticated technology that makes them capable of transmitting 30% more than conventional T and AT profiles.



Benefits:

- High transmission capacity
- High abrasion resistance
- Operating temperature range from -10 to +80 °C

Profiles:

- T2,5 - T5 - T10 - AT5 - AT10 - XL - L



ELATECH® special belts

Thanks to their physical and mechanical properties and a wide range of materials that can be brought to the surface, ELATECH® belts meet any synchronized conveying need.



ElaCleats

Drawings of the most suitable cleat for any polyurethane belt can be downloaded in CAD or PDF format.

Availability of a vast array of customized and standard cleats, specially designed for the most diverse applications.

ELATECH® EMF  
Mechanical Fastening



ELATECH® EFT  
False Teeth



Linings:  
Fabric  
Foam  
PU and PVC  
Rubber  
Silicon





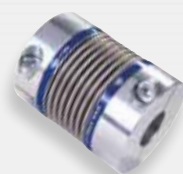
# DRIVE COUPLINGS

## ZERO-BACKLASH COUPLINGS FOR SERVOMOTOR APPLICATIONS



### TRASCO® ES

- Zero-backlash precision coupling.
- Absorbs shocks and vibrations through an elastomeric ring in different hardnesses
- Also suitable for axial or blind mounting
- Available in clamp hub design and shrink disc execution



### SERVOPLUS®

- Zero backlash, high torsional stiffness bellows coupling.
- Operating temperature up to 300 °C
- Clamp shaft coupling
- Innovative modular design



### SERVOMATE®

- Zero backlash disc pack coupling with high torsional stiffness.
- Compact design
- High torsional stiffness
- Available with single or double disc package
- Clamp shaft coupling



### SAFEMAX®

- Zero backlash torque limiting system for direct or indirect transmission.
- Available in combination with TRASCO® ES, SERVOPLUS® or SERVOMATE®
- Quick release (1-3 ms)
- Low inertia moment
- Axial mounting (if desired)

## COUPLINGS FOR GENERIC APPLICATIONS



### TRASCO®

- Compact coupling ideal for applications involving shocks and vibrations absorbed by elastomeric rings of different hardnesses.
- Absorbs torsional vibrations
- Compensates for axial, radial and angular misalignments
- Available in cast iron, aluminium, steel and for taper bush mounting SER-SIT®



### SITEX® / SITEX® FL

- Toothed coupling with polyamide ring for generic mechanical and hydraulic applications (pumps).
- Maintenance-free
- Compact, easy to install
- FL design for flywheel-pump applications in hydrostatic drives
- NYLEX design with polyamide hubs for light-duty applications



### UNIVERSAL JOINT

- Universal joints for general mechanical applications requiring high misalignment and speeds up to 1000 rpm.
- Single, double and extendable shaft design
- Precise and versatile transmission

## HEAVY-DUTY COUPLINGS



### METALDRIVE®

- Steel disc coupling, suitable for maintenance-free applications even at high speed.
- Backlash-free, torsionally stiff
- Maintenance-free
- Operating temperature up to 300° C
- Allows axial, angular and radial misalignments
- Available according to API610 and API 671
- Available with carbon fiber intermediate shaft



### SITEX® ST

- Steel toothed coupling for applications requiring high operational reliability.
- High transmissible torques
- Very long service life
- Requires lubrication
- Also available in the version compliant with AGMA standards
- Suitable for horizontal applications



TRASCO® ES

SERVOPLUS®

SERVOMATE®

SAFEMAX®

TRASCO®

SITEX® / SITEX® FL

GIUNTA A SNODO

METALDRIVE®

SITEX® ST

SIT-LOCK®

SERLOCK®



# LOCKING DEVICES



### SIT-LOCK®

- Locking assemblies are ideal for any shaft-hub connection application.
- Help reduce the costs of the assembly
- Ideal for next-generation applications
- High axial and angular positioning accuracy
- Ideal for applications involving acceleration and deceleration
- Zero backlash
- Easy to mount



### SERLOCK®

- Innovative locking system for all power transmission components designed for taper bush.
- Zero backlash
- Quick and easy to mount
- Eliminate the cost of additional machining





## SELF-ALIGNING BEARING UNITS

ASAHI® bearing units, Japanese production, are used in various applications. Their construction includes an exclusive locking pin that allows self-alignment and prevents the rotation of the outer ring, thus increasing the service life of the installation.

The range is one of the largest worldwide and includes bearing units with cast iron, stainless steel and stamped sheet metal bodies.

Bearing units designed for the insertion of a protection cap, as well as for high-temperature applications and very heavy radial loads are available.

### BEARING UNITS FOR GENERIC APPLICATIONS



#### Bearing units with CAST IRON body

High machining quality and accuracy ensure maximum reliability and durability in any application, even the most severe.

- Wide range of designs
- For 12 mm to 140 mm shaft diameters



#### Bearing units with SHEET METAL body

With stamped and galvanized sheet metal body for low-load economical applications.

- For 12 mm to 35 mm shaft diameters

### BEARING UNITS FOR CORROSIVE ENVIRONMENTS OR FOOD/PACKAGING INDUSTRY APPLICATIONS



#### STAINLESS STEEL bearing units

Ideal for applications in the food industry.

- Excellent resistance to corrosion
- Optionally supplied with FDA compliant grease
- For 12 mm to 50 mm shaft diameters



#### SILVER/STAINLESS bearing units

Featuring a special zinc alloy body and an AISI 304 stainless steel bearing, these assemblies combine maximum lightweight with quick and accurate mounting thanks to the marking of the centres.

- Very compact dimensions
- For 10 mm to 30 mm shaft diameters



BEARING UNITS WITH CAST

IRON BODY

BEARING UNITS WITH SHEET

METAL BODY

STAINLESS STEEL BEARING

UNITS

SILVER/STAINLESS BEARING

UNITS

JOINT ARTICULATIONS

MOTOR BASES

ANTIVIBRATION MOUNTS



### BALL JOINTS AND CONNECTING ROD ENDS



#### JOINT ARTICULATIONS

Ball joints and connecting rod ends with bronze, Teflon or steel on steel insert.

Steel on steel or steel on aluminium 90 degree ball joints. Weld-on ends for hydraulic cylinders.

- High reliability
- Self-aligning
- Large offset angle allowed
- High load capacity
- Long service life

## MOTOR BASES AND ANTIVIBRATION MOUNTS



#### MOTOR BASES

- COMPATTA (size 80 ÷ 225)
- VAREX (size 56 ÷ 132)
- LINEA (size 56 ÷ 400)
- TV909/910 - longitudinal slide
- TB911 - tilt slide



#### ANTIVIBRATION MOUNTS

SIT-PAULSTRA elastomeric mounts SIT-PAULSTRA control and isolate noise, impacts and vibrations to provide ideal conditions for the operation of machines and equipment, extending their service life and protecting the environment. The use of sophisticated calculation and simulation software maximizes results while minimizing costs.

- Extremely wide range for industrial and civil uses
- Rubber-metal solutions
- Metal solutions

# HIGH-PRECISION SERVO REDUCERS

Nidec Shimpo's range of servo reducers is designed to provide maximum flexibility and ease of configuration. SIT supports applications with a team of experts in the development of new applications as well as interchangeability with existing ones. The product ensures high reliability and top of the market performance.



**VR Series  
COAXIAL EPICYCLOIDAL  
REDUCERS**

Noiseless, low backlash, high efficiency, compatible with all servomotors.



**EV Series  
EPICYCLOIDAL REDUCERS  
WITH RIGHT ANGLE**

Noiseless, low backlash, high efficiency, compatible with all servomotors.



**RIGHT ANGLE  
WORM GEARBOXES**

Hollow shaft with globoidal worm able to absorb strong shock and ensure high positioning accuracy.



**FLEXWAVE REDUCER**

Elastic deformation, lightweight, zero backlash and compact.  $1 \div 50 \rightarrow 120$  transmission ratio.



**CORONEX REDUCER**

High torsional stiffness cycloidal reducer. Zero backlash, for high loads and dynamic cycles.



**HIGH PRECISION  
RACK AND PINION**

Very compact and precise transmission system with low inertia.



**TRACTION DRIVE**

Roller reduction system (gearless): minimizes vibration and noise, ensuring a steady rotating motion.



COAXIAL EPICYCLOIDAL

EPICYCLOIDAL WITH RIGHT  
ANGLE

RIGHT ANGLE WORM  
GEARBOXES GLOBOIDAL

WORM GEAR MESH

FLEXWAVE

CORONEX

RACK AND PINION

TRACTION DRIVE





# MODULAR BELTS AND CHAINS

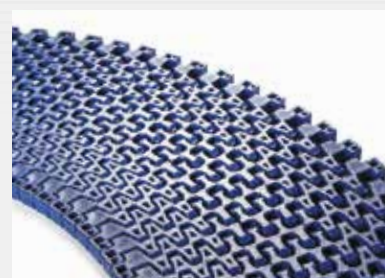
SIT modular belts and chains are used in a broad range of transport and conveying applications. Thanks to their modular structure and variety of designs, they are available in virtually any length and width. They feature high resistance to corrosion and abrasion combined with handling synchronization.

Designed and manufactured in compliance with the highest quality standards as well as FDA and EU standards.



## STRAIGHT CONVEYOR BELTS

Available with pitches ranging from 1/2" to 2" in a wide array of designs for any application, from food handling to heavy-duty conveying. Available in different materials depending on the application.



## CURVED CONVEYOR BELTS

Designed for curved conveying paths. Also suitable for straight paths. Wide range of curvatures starting from 1,4 m. Available in different materials depending on the application.



## CUSTOMER PRODUCTS

The expertise in plastic molding of one of its group companies, SIT can offer the development of special parts to customer specifications.



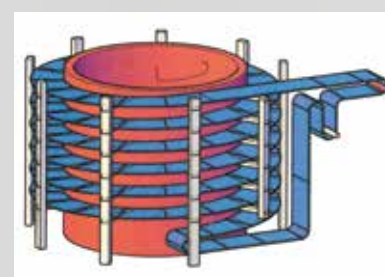
## STRAIGHT CHAINS

Designed for the handling of bottles and cans in conveying, transport, packaging and accumulation line facilities. Made from low-friction POM acetal resin, with stainless steel pins.



## CURVED CHAINS

Designed for curved conveying paths. Made from low-friction POM acetal resin, with stainless steel pins.



## SOLUTIONS FOR SPIRALS

Modular belts for spiral applications such as refrigeration tunnels, cooking and many others.



STRAIGHT CONVEYOR BELTS

CURVED CONVEYOR BELTS

CUSTOMER PRODUCTS

STRAIGHT CHAINS

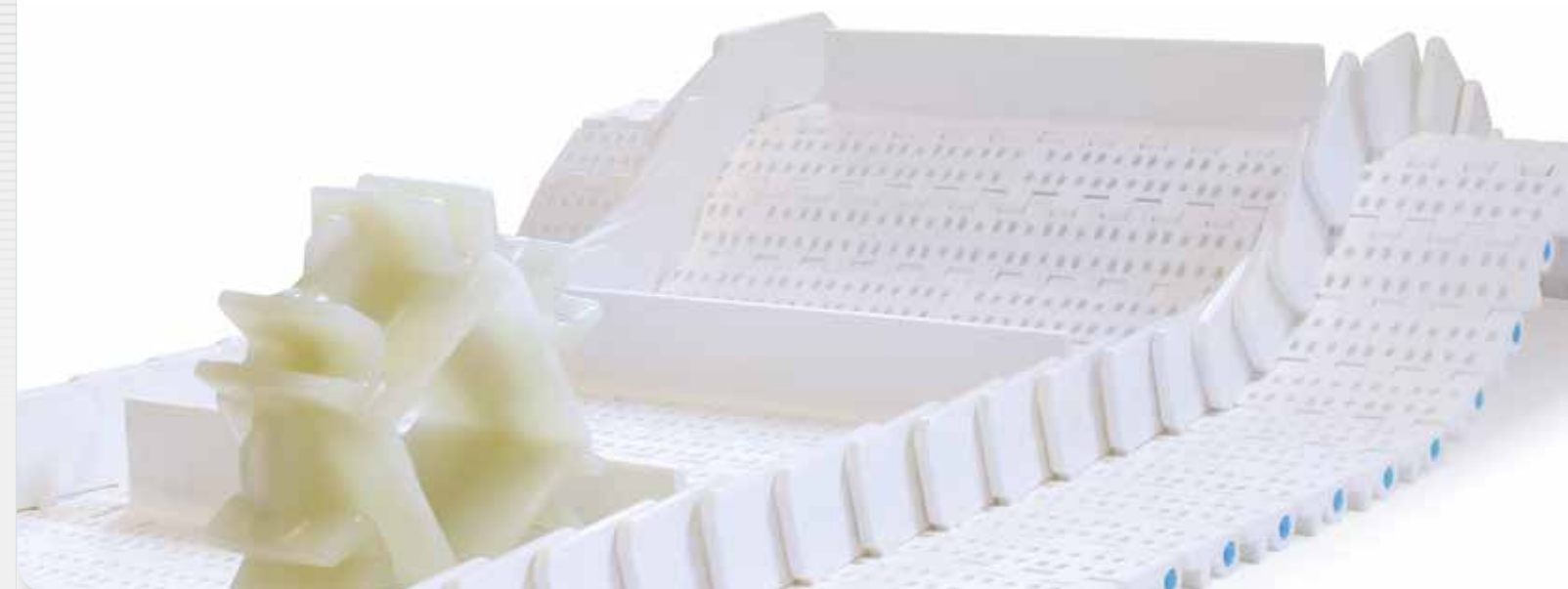
CURVED CHAINS

SOLUTIONS FOR SPIRALS

FLIGHTS AND SIDE WALL

SPROCKETS

NITTA FLAT BELTS



## FLIGHTS AND SIDE WALL

Wide range of flights and side wall in different heights, materials and designs.



## SPROCKETS

In addition to a range of stamped sprockets, SIT can supply specially made sprockets in different materials, designs and numbers of teeth.

# NITTA FLAT BELTS



## FLAT BELTS

Different types of flat belts for application in power transmission and conveying that guarantee uniform and high-performance transmission speed.

- "POLYBELT" type with polyamide foil (nylon)
- "POLYSPRINT" type with polyester fabric + TPU
- "SE" type jointless (made by sleeve)



STANDARD CHAINS

CONVEYOR CHAINS

ACCUMULATION CHAINS

LIFTING CHAINS

SPROCKETS

PLATE WHEELS

# CHAIN DRIVES

SIT S.p.A. high-performance chain drive systems are used in a wide range of industrial applications. They meet and exceed ISO wear and fatigue resistance requirements. With a wide range of products and a high production capacity, SIT offers innovative and customized solutions.



**STANDARD CHAINS**

High resistance to wear and fatigue.  
Wide and comprehensive range in compliance with ISO 606, up to pitch 2".



**CONVEYOR CHAINS**

Roller chains available in different versions for the most diverse applications.  
With straight or right-angle attachments, rubber coated jumpers and protruding pins.



**ACCUMULATION CHAINS**

Conveyor chains with a row of rollers or offset rollers.



**LIFTING CHAINS**

Chains suitable for lifting heavy loads at low speeds.



**SPROCKETS**

- Simple/double/triple sprockets
- Finished bore hardened sprockets
- Special sprockets



**PLATE WHEELS**

- Simple/double/triple plate wheels
- Special plate wheels





#### HEADQUARTERS

**SIT S.p.A.**

**Viale A. Volta, 2**

**20090 Cusago (MI) - Italy**

**Tel. +39.02.89144.1**

**Fax +39.02.89144291**

**info@sitspa.it**

**www.sitspa.it**

#### EXPORT

Fax +39.02.89144293

export@sitspa.it

#### FACTORY

Via G. Carminati, 15

24012 Val Brembilla (BG) - Italy

#### SIT GERMANY

##### **SIT ANTRIEBSELEMENTE GmbH**

Rieseler Feld 9 (Gewerbegebiet West)

D - 33034 Brakel

Tel. +49 52 72 39 28 0

Fax +49 52 72 39 28 90

E-mail: info@sit-antriebselemente.de

Web: www.sit-antriebselemente.de

#### SIT SPAIN

##### **DINAMICA DISTRIBUCIONES S.A.**

Ctra. N-II, Km 592,6

E - 08740 S. Andreu De La Barca

(Barcelona)

Tel. +34 93 653 35 00

Fax +34 93 653 35 08

E-mail: dinamica@dinamica.net

Web: www.dinamica.net

#### SIT USA

##### **S.I.T. INDEVA, Inc.**

3630 Green Park Circle

NC - 28217 Charlotte

Tel. +1 704 357 8811

Fax +1 704 357 8866

E-mail: info@sit-indeva.com

Web: www.sit-indeva.com

#### SIT SWITZERLAND

##### **SIT (Schweiz) AG**

Lenzbüel 13

CH - 8370 Sirmach

Tel. +41 71 969 50 00

Fax +41 71 969 50 01

E-mail: info@sit-antriebstechnik.ch

Web: www.sit-antriebstechnik.ch

#### SIT FRANCE

##### **FOGEX SAS**

215, Rue Henri Barbusse

F - 95100 Argenteuil

Tel. +33 1 34 34 46 00

Fax +33 1 34 34 46 01

E-mail: info@fogex.com

Web: www.fogex.com

#### SIT CHINA

##### **SIT INDEVA (SHANGHAI) LTD.**

Building 2, 269 YuanZhong Road

Nanhui Industrial park

Pudong new area

PRC - 201300 Shanghai

Tel. +86 021 5108 2206

Fax +86 021 6486 3511

E-mail: info@sit-shanghai.com

Web: www.sit-shanghai.com

#### SIT INDIA

##### **SIT PTC INDIA PVT. LTD.**

Plot no. 677, s.no. 269/3

Paud Road, Bhugao

Taluka - Mulshi - Pune - 412 115

Maharashtra - India

Tel. +91 9158 5921 11

E-mail: a.nangre@sitspa.com

Web: www.sitspa.com